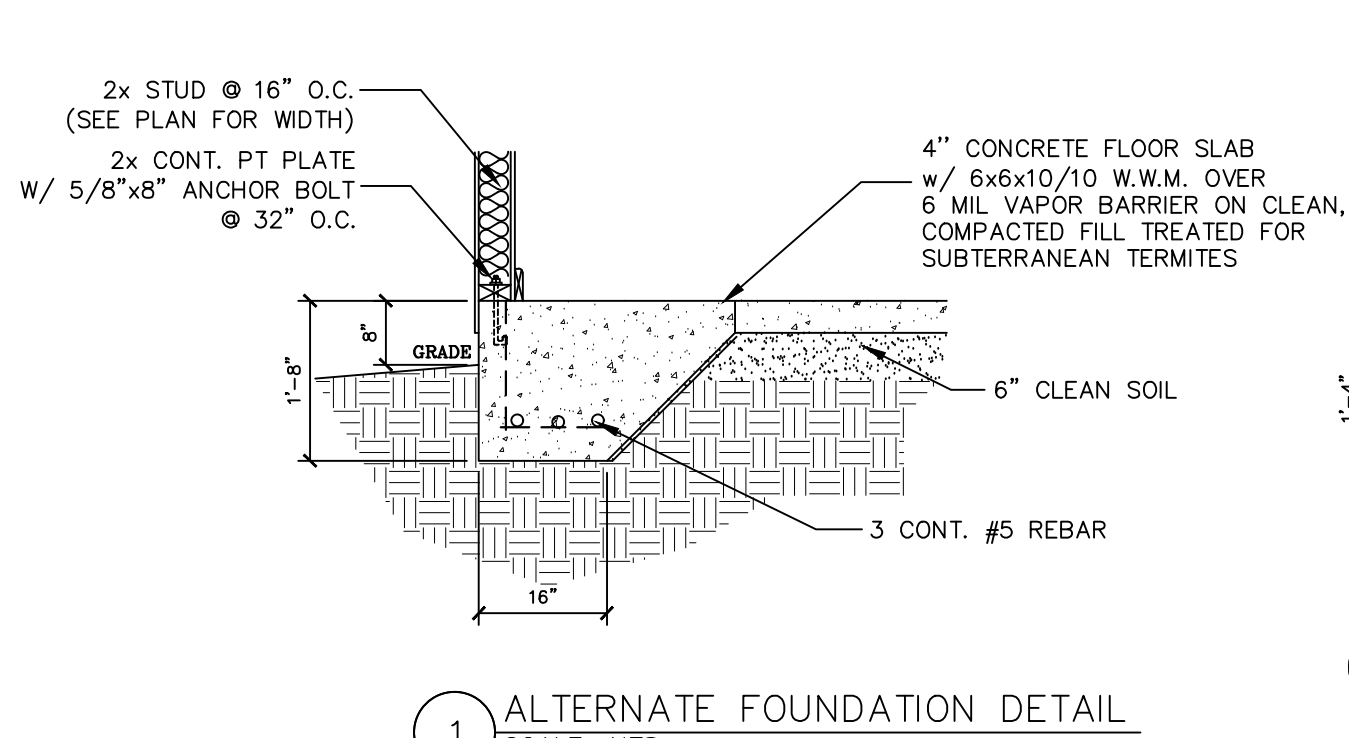
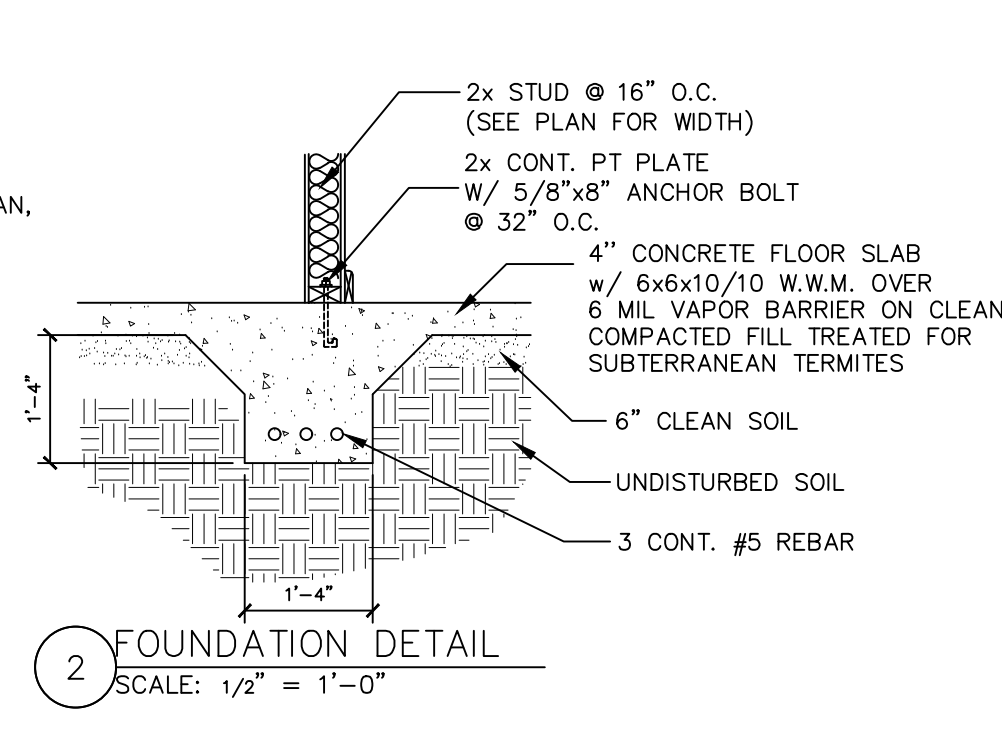


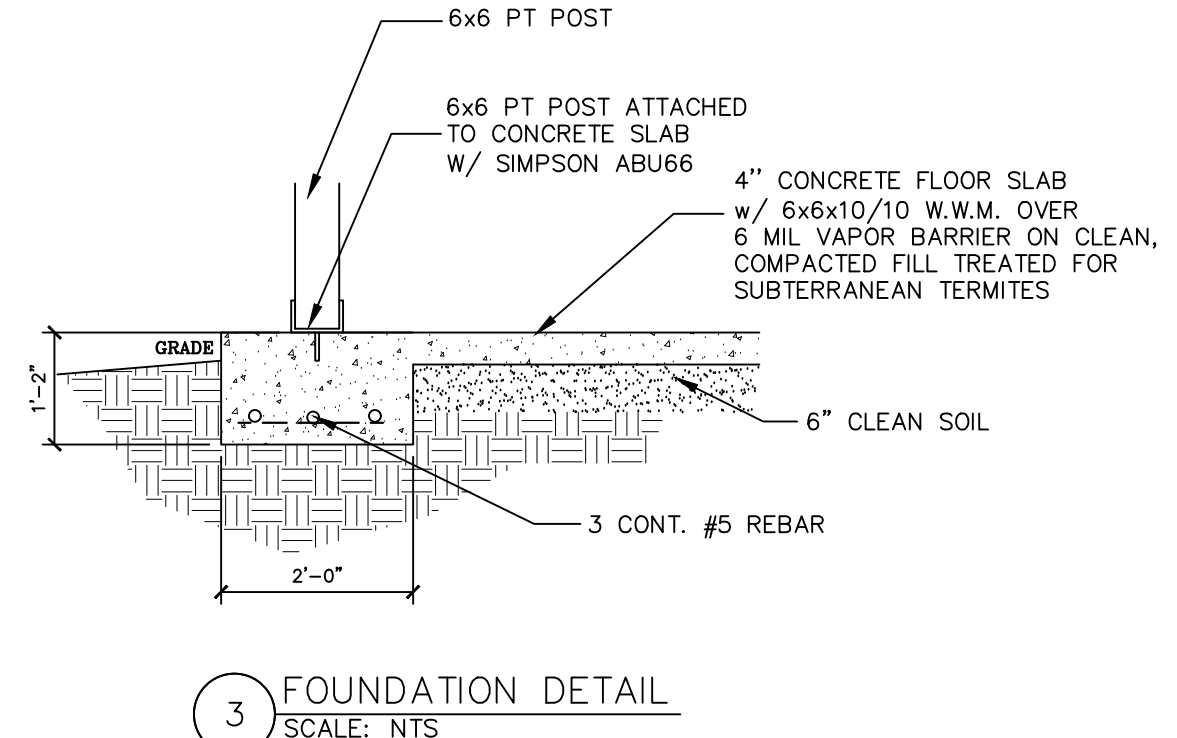
1 FOUNDATION DETAIL
SCALE: NTS



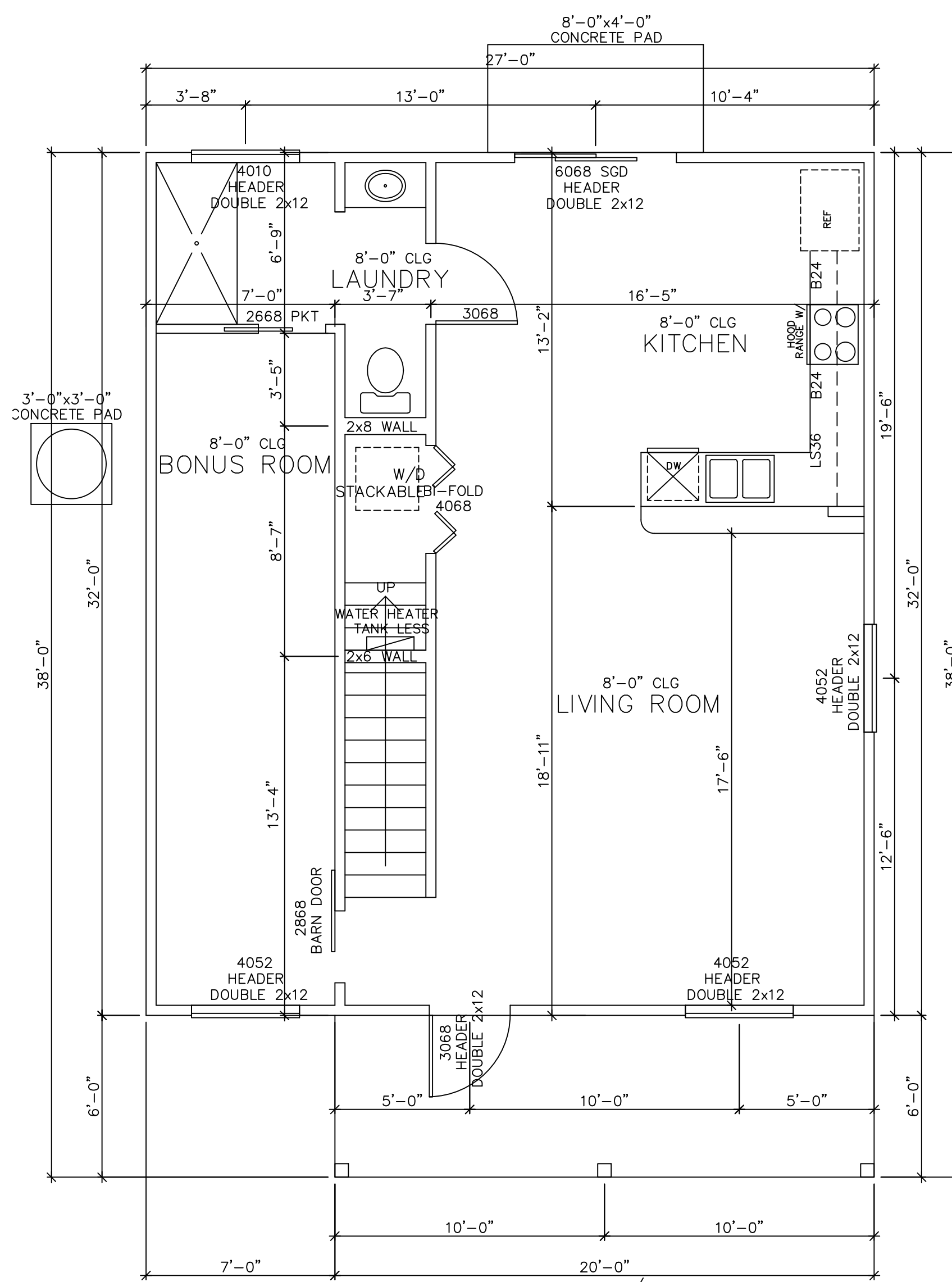
1 ALTERNATE FOUNDATION DETAIL
SCALE: NTS



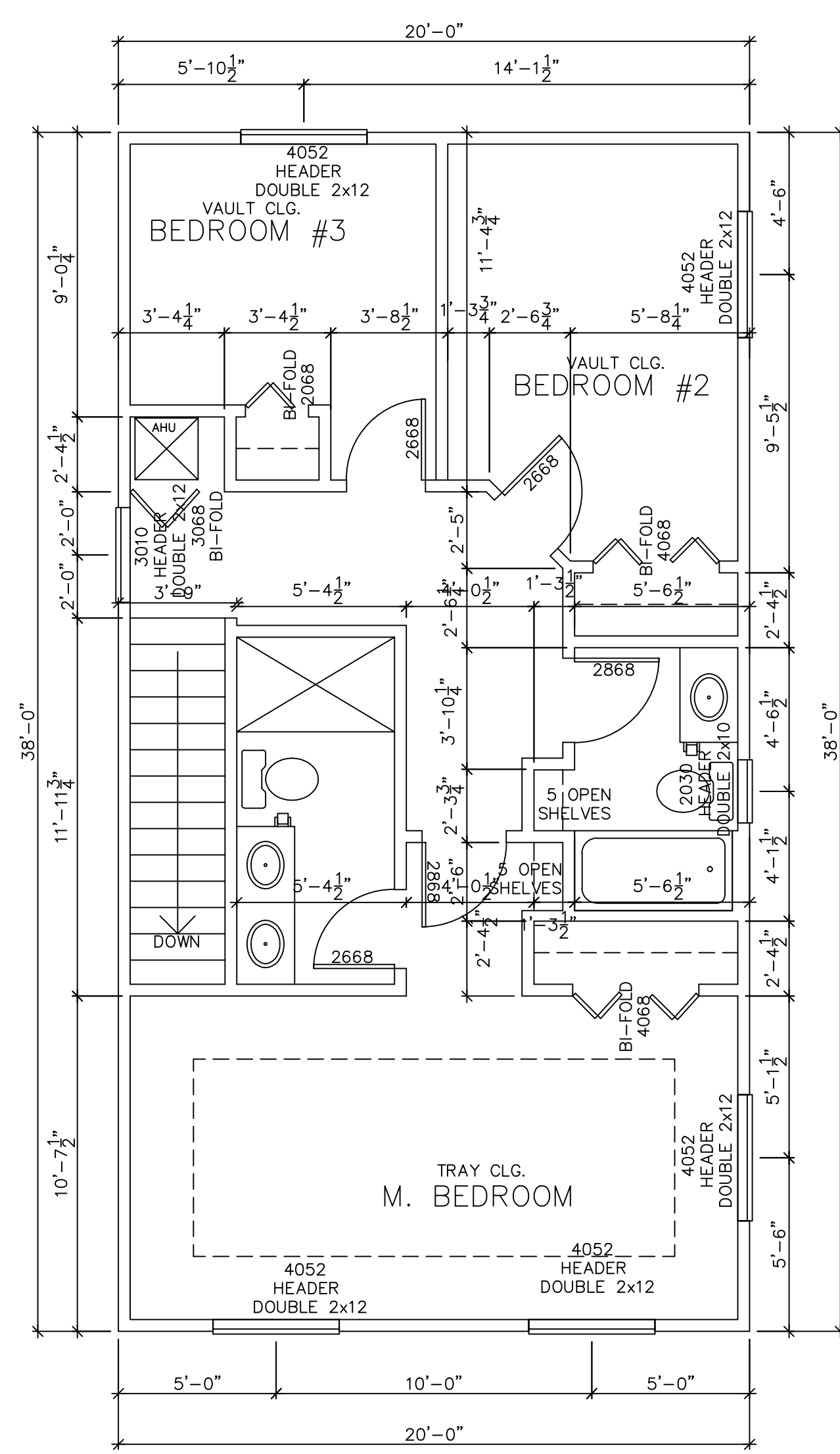
2 FOUNDATION DETAIL
SCALE: 1/2" = 1'-0"



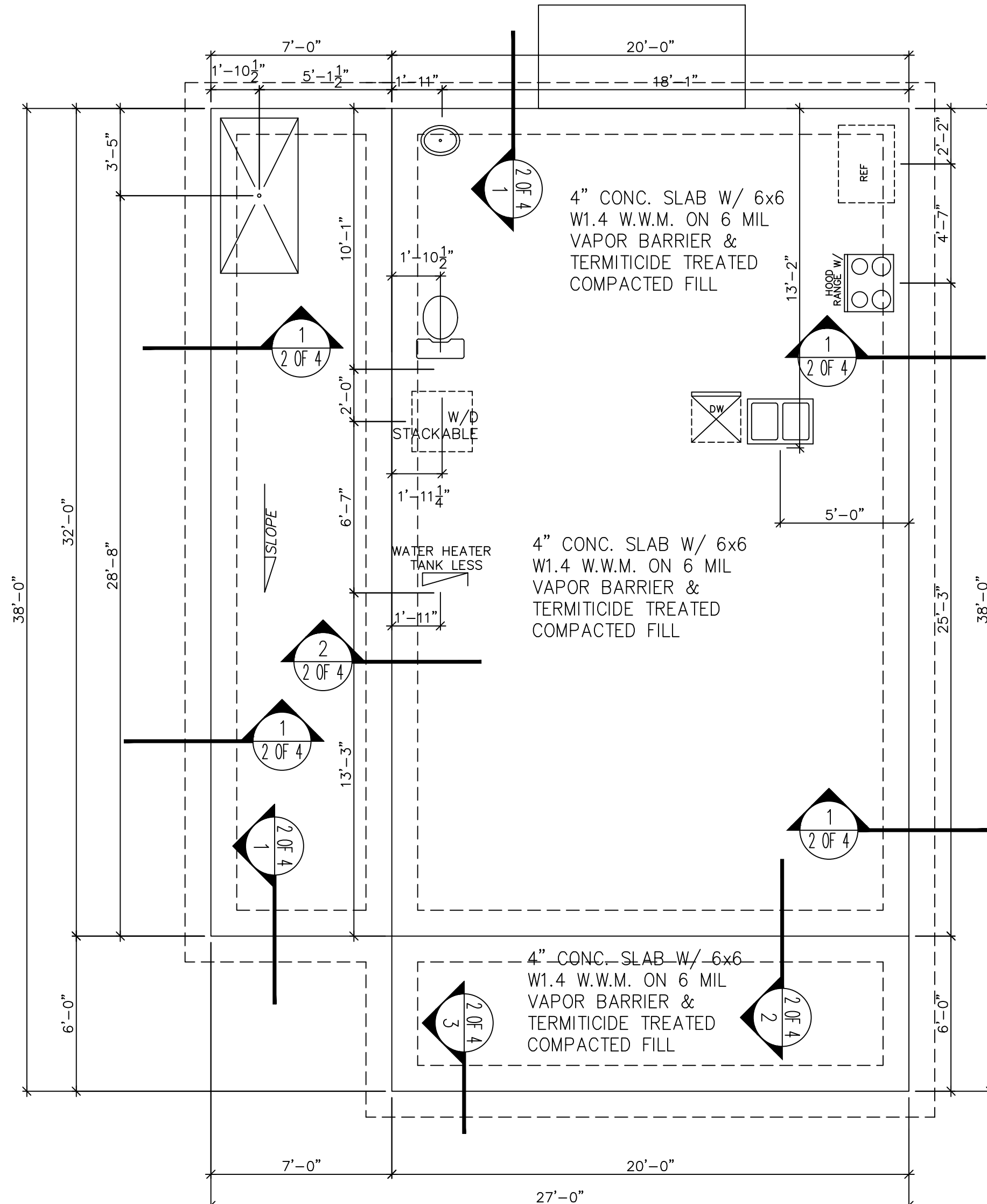
3 FOUNDATION DETAIL
SCALE: NTS



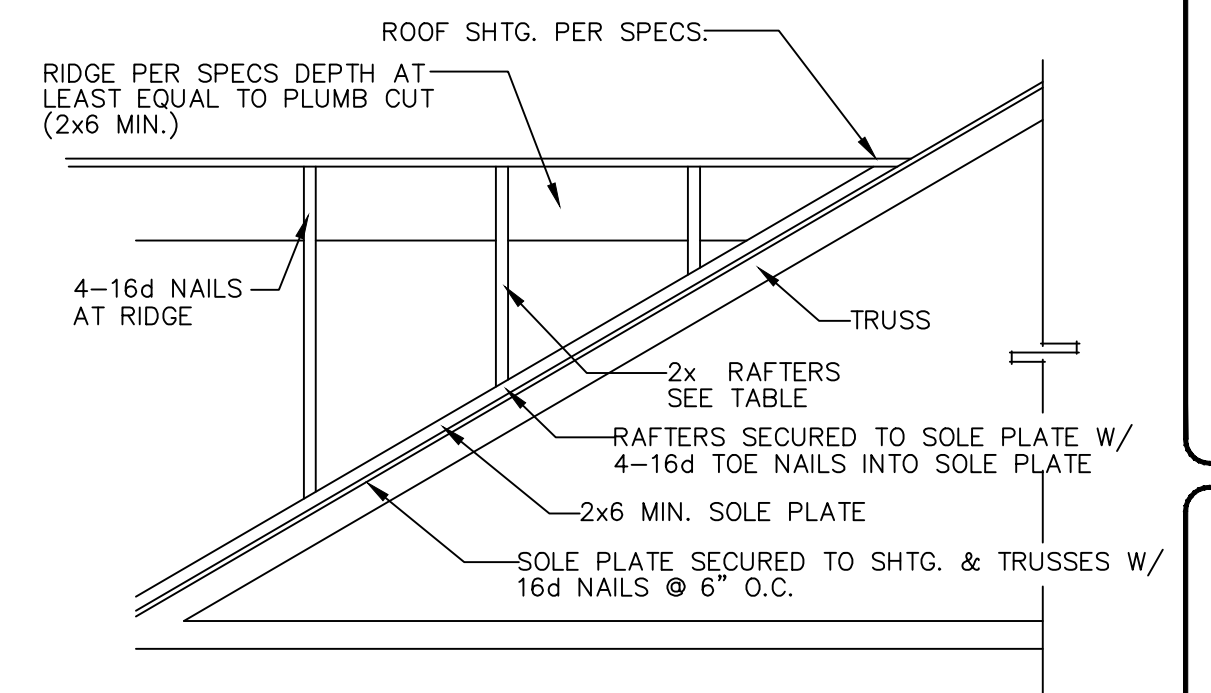
1st FLOOR W/
BONUS PLAN
SCALE: 1/4" = 1'-0"



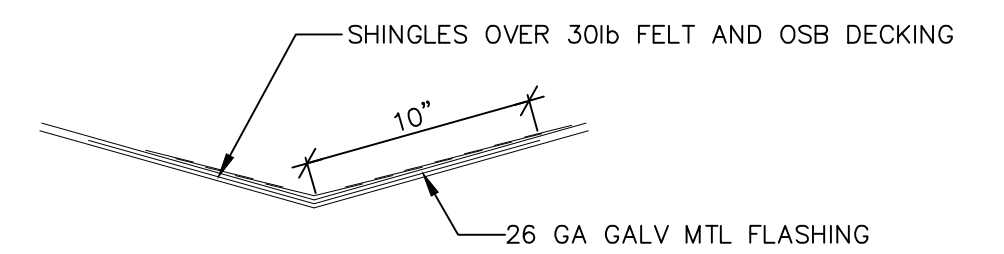
2ND FLOOR PLAN
SCALE: 1/4" = 1'-0"



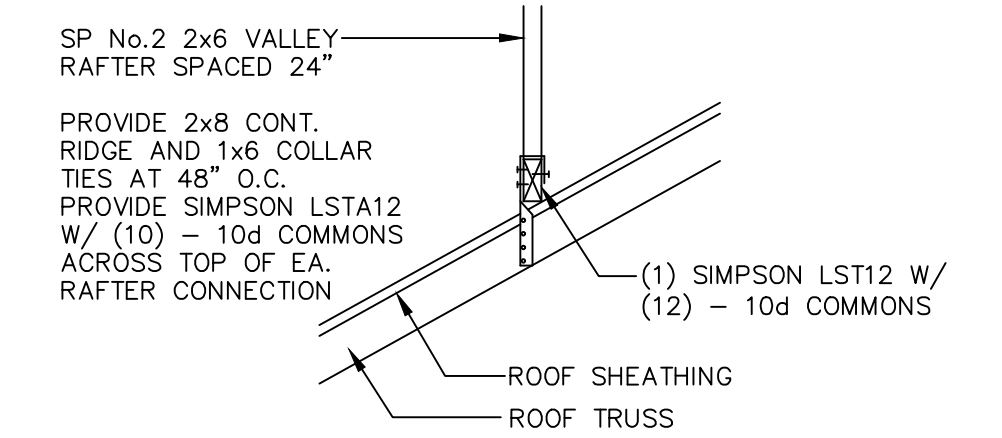
1st FLOOR W/
BONUS PLAN
SCALE: 1/4" = 1'-0"



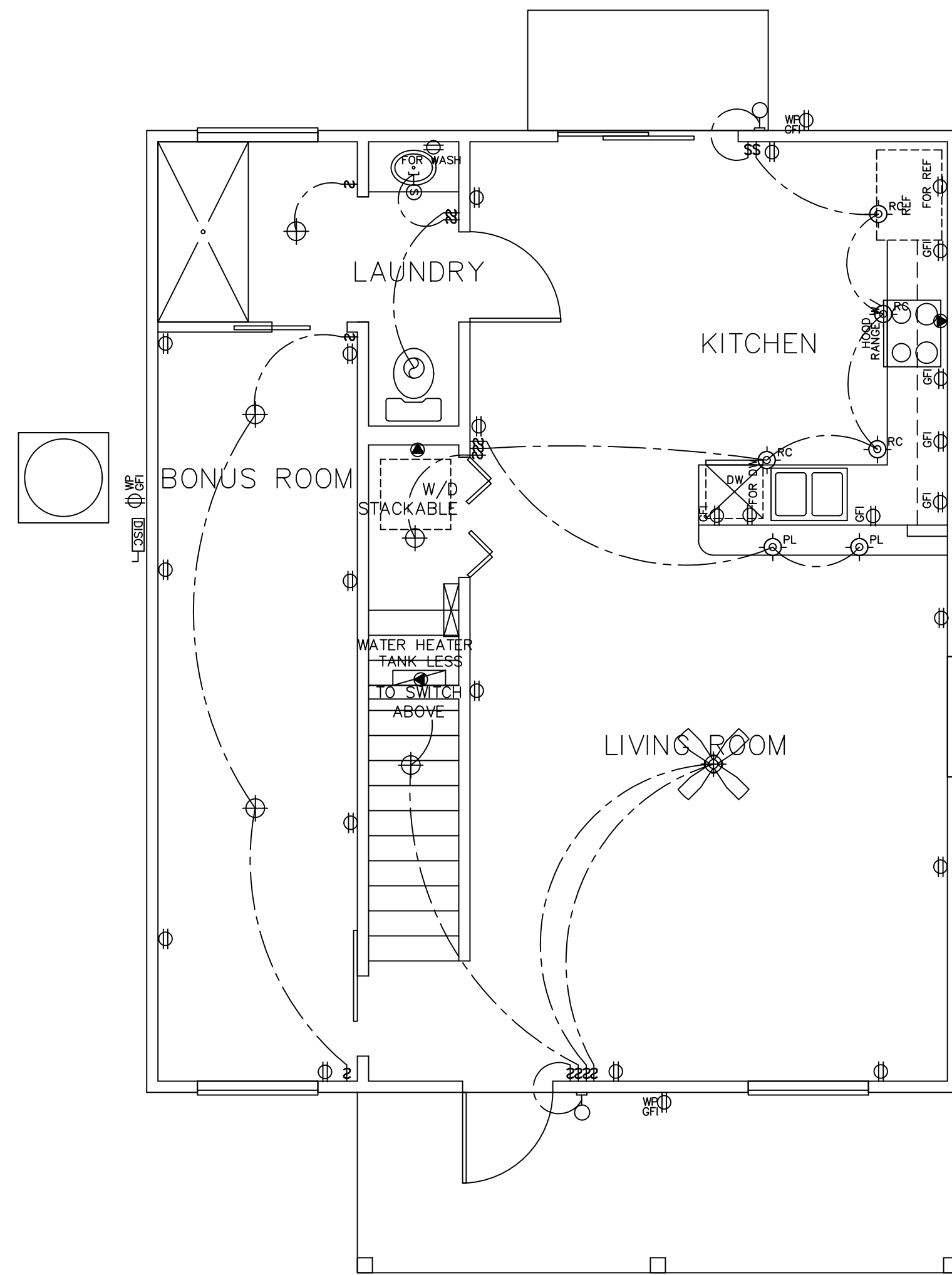
CONVENTIONALLY FRAMED VALLEY DETAIL
NOT TO SCALE



VALLEY FLASHING
NOT TO SCALE



VALLEY FRAMING DETAIL
NOT TO SCALE

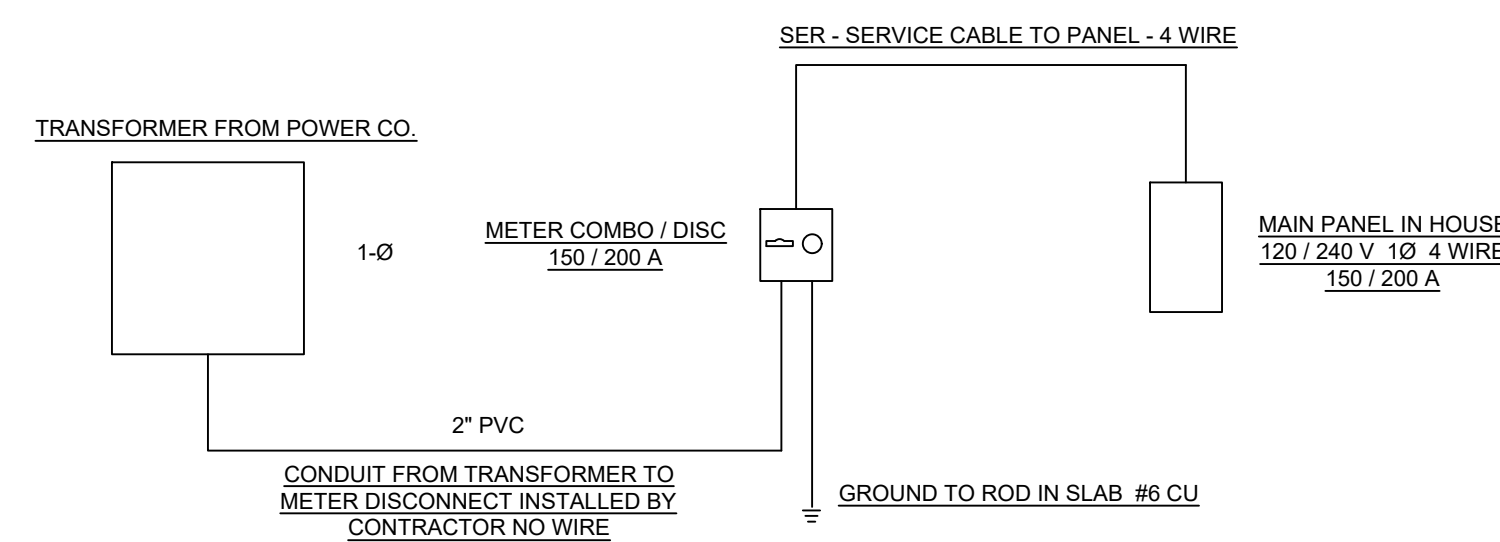


1st FLOOR ELECTRICAL W/
BONUS PLAN

SCALE: 1/4"=1'-0"

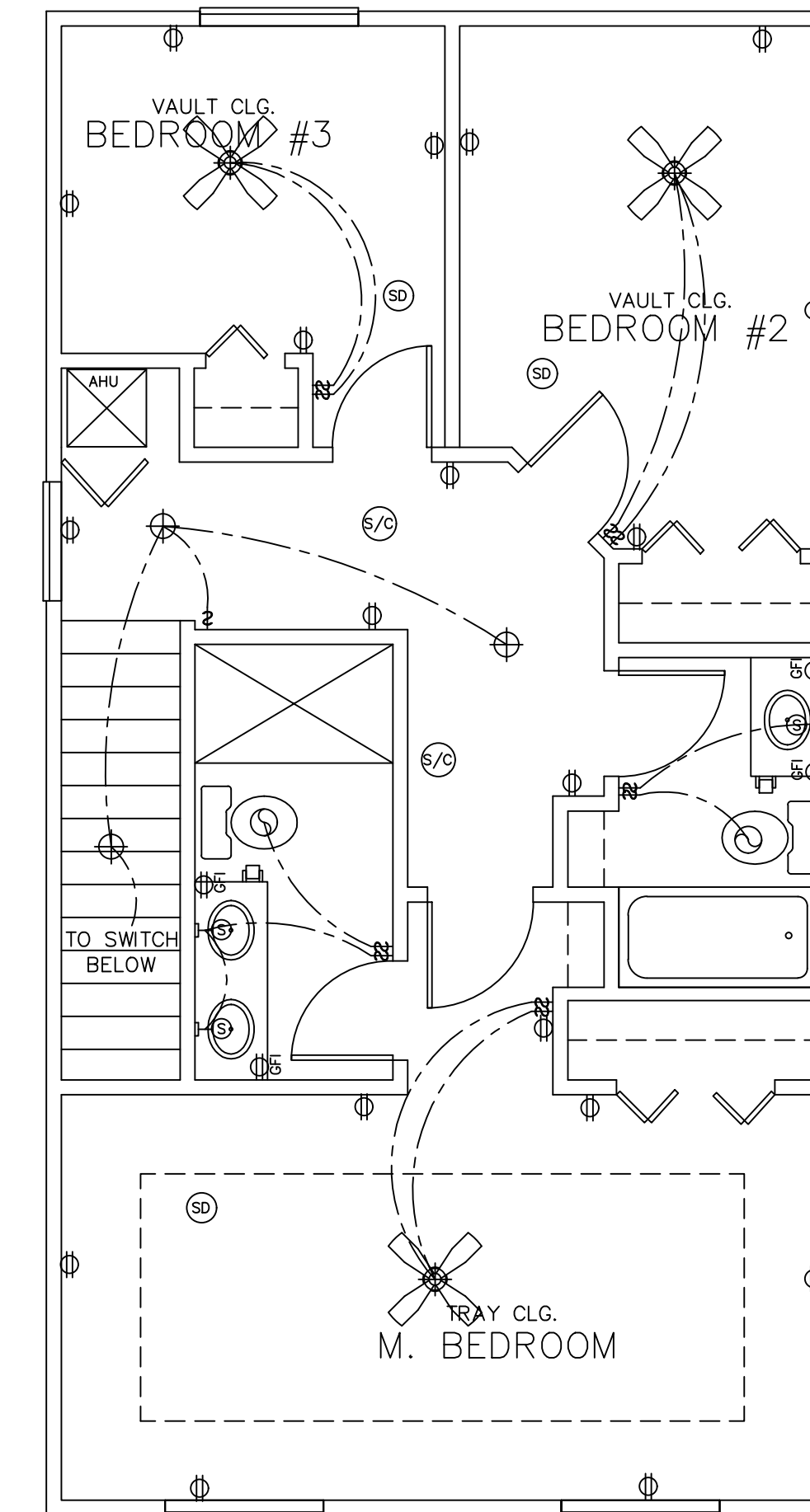
NOTE:
-Location of electric outlets are a representation only. outlets will be located per local building code.
-Provide AFCI(arc-fault circuit interrupters) in all dwelling unit bedrooms per NEC article 210-12)

ELECTRICAL SYMBOL KEY			
	SURFACE MOUNTED LIGHT	\$	SINGLE SWITCH
	WALL MOUNTED LIGHT	\$3	3-WAY SWITCH
	WALL MOUNTED SCONCE LIGHT	\$4	4-WAY SWITCH
	RECESSED CAN LIGHT	\$5	REMOTE CONTROL SWITCH
	VAPOR-PROOF RECESSED	\$6	DIMMER SWITCH
	PENDANT LIGHT	\$7	DOOR BELL CONNECTION
	RECESSED EYEBALL CAN LIGHT	\$8	DOOR CHIME
	EXHAUST FAN W/ LIGHT	\$9	TV OUTLET
	EXHAUST FAN	\$10	PHONE OUTLET
	UNDER CABINET	\$11	DATA OUTLET
	RECESSED FLOURESCENT LIGHT	\$12	JUNCTION BOX (FUTURE FIXTURE)
	DOUBLE BULB FLOURESCENT LIGHT	\$13	THERMOSTAT
	TRACK LIGHTING	\$14	OUT-OFF SWITCH
	EXTERIOR FLOODLIGHT	\$15	SURROUND SOUND BASE
	EXTERIOR PATH LIGHT	\$16	SURROUND SOUND SPEAKER
	220 OUTLET	\$17	200 AMP ELEC. PANEL
	110 OUTLET	\$18	METER
	110V RECEPTACLE (SWITCHED)	\$19	CENTRAL VAC STATION
	QUAD RECEPTACLE	\$20	INTERCOM STATION
	UNDER COUNTER 110 OUTLET	\$21	SMOKE DETECTOR
	WATER-PROOF OUTLET	\$22	SMOKE DETECTOR / CARBON MONOXIDE
	GROUND FAULT OUTLET	\$23	GARBAGE DISPOSAL
	WP GFI SOFFIT OUTLET	\$24	CEILING FAN W/ PULL CHAIN FOR LIGHT
	GFI FLOOR OUTLET	\$25	CEILING FAN W/ LIGHT
	GENERATOR AUTO TRANSFER SWITCH	\$26	



ELECTRICAL NOTES

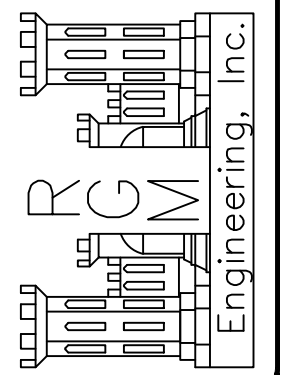
- ELECTRICAL OUTLET HEIGHTS AS MEASURED FROM FINISHED FLOOR TO CENTERED LINE OF THE BOX TO BE: 12" AFF (GENERAL) - KITCHEN 44" AFF - BATHROOM 39" AFF (44" AFF WITH RAISED VANITY) - LAUNDRY ROOM 36" AFF - EXTERIOR WATERPROOF 12" AFF TO 42" AFF - GARAGE GENERAL PURPOSE - 44" AFF - KITCHEN ISLAND OUTLETS MAXIMUM OF 12" BELOW COUNTER SURFACE
- ALL TRIM PLATES & DEVICES TO BE GANGED, WHERE POSSIBLE.
- ELECTRICAL SWITCHES TO BE AT 42" CENTERLINE ABOVE FINISHED FLOOR.
- ELECTRICAL PLAN IS INTENDED FOR BID PURPOSES ONLY. ALL WORK SHALL BE DONE IN STRICT ACCORDANCE WITH THE NATIONAL ELECTRIC CODE, LATEST EDITION, BY A LICENSED ELECTRICAL CONTRACTOR WHO SHALL BE RESPONSIBLE FOR THE INSTALLATION & SIZING OF ALL ELECTRICAL, WIRING & ACCESSORIES.
- SMOKE AND CARBON MONOXIDE DETECTORS SHALL BE IN ACCORDANCE WITH 2017 FLORIDA BUILDING CODE, SECTIONS R314 AND R315
- PROVIDE AFCIs (ARC FAULT INTERRUPTERS) IN DWELLING UNIT BRANCH CIRCUIT LOCATIONS PER FBCR E3902.12
- GFI's (GROUND FAULT INTERRUPTERS) FOR WATER AREAS AND OUTDOOR CIRCUITS PER FBCR E3902
- ALL PERMANENT INTERIOR LIGHTING IS 100% HIGH EFFICACY CFL/LED LAMPS PER FBCR E404.1
- ALL 125-VOLT 15-AND 20 AMP RECEPTACLES INSTALLED INSIDE AND OUTSIDE OF DWELLING UNITS, AND IN ATTACHED AND DETACHED GARAGES SHALL BE TAMPER RESISTANT RECEPTACLES



2ND FLOOR ELECTRICAL PLAN

SCALE: 1/4"=1'-0"

ROBERT G. MORGAN JR., P.E.
#88118
1928 RIVER LAGOON TRACE
ST. AUGUSTINE, FLORIDA 32092
904-814-7633
C.A. #80798



SIGNED (DESIGNER)

HOUSE PLANS FOR
302 TWELFTH STREET
ST. JOHNS COUNTY

DRAWN BY
K.E.B.
DATE
3-6-19
SCALE
SCALE
CHECKED BY
R.G.M.
PLAN NO
SHEET NO
3 OF 4